



Leon High School

Tallahassee, FL 32308 (850) 617-5700

Lion Steel Band Program

Dr. Kayleen Justus, [Director](mailto:justusk@leonschools.net)
justusk@leonschools.net

April 14th, 2023

Lion Steel Parents, Students, and Potential New Members,

This letter contains all of the important information related to the **AUDITION PROCESS for Lion Steel for the 2023-2024 School Year**. With the exception of the students who are already in Canboulay during the 2022-2023 school year, ALL students must audition to be placed in the intermediate "Jouvert" band, the advanced "Bacchanal" band, or the advanced honors "Canboulay" band. **If you are a current student and do NOT complete an audition, you will not be permitted to add a Lion Steel band to your schedule** (unless you arrange with Dr. Justus and your guidance counselor to enroll in one of the beginning steel bands).

All current Lion Steel students will audition during our class meeting time on **May 15th – 19th, 2023** (audition schedule will be posted on our website in early May). All students who wish to audition who are not currently enrolled in a Lion Steel band **MUST** contact me (Dr. Justus) at justusk@leonschools.net to arrange an alternative audition time after school or during lunch that week. I will also conduct placement auditions at Raa Middle School for those students wishing to audition into the Jouvert, Bacchanal, or Canboulay bands as incoming freshmen.

Audition Process Each student will audition independently for Dr. Justus in the steel band portable (or at Raa Middle School). The audition will last approximately 5 – 7 minutes and will include the following elements (see audition packet for detailed info):

- 1) 2 major scales at 120bpm selected by Dr. J (2 of 8 for Jouvert, 2 of 10 for Bacchanal, 2 of 12 for Canboulay)
- 2) one-octave chromatic scale (beginning on C) at 120 bpm,
- 3) prepared excerpt on primary instrument (measures and tempos as listed below),
- 4) moderately challenging sight-reading excerpt in cut time.

The audition materials listed above, with the exception of the sight-reading excerpt, are included at the end of this letter. Dr. Justus and Mr. Sahely can print out specific parts for students upon request. Students should practice with a metronome and can also choose to study to the available of the prepared excerpts by listening/viewing them on YouTube.

The audition results for the 2023-2024 bands will be posted to the [Lion Steel website \(lionsteel.leonperformingarts.org\)](http://lionsteel.leonperformingarts.org) by Thursday, May 25th, 2023. The audition results will be submitted to Leon Guidance for scheduling on this date.

Please Note: The Lion Steel auditions are NOT part of students' curricular grade for the 2022-2023 school year and will not impact Final Grades for anyone currently enrolled in a Lion Steel band.

If you have any questions about the audition process or any materials included with this letter, please reach out to me!

Cheers,
Dr. Kayleen Justus

Director of Steel Bands
Leon High School
justusk@leonschools.net

AUDITION MATERIALS – Lion Steel 2023 – 2024:

1) **Major Scales (@ quarter note = 120bpm, 4/4 time signature):**

Jouvert: Ab, Eb, Bb, F, C, G, D, A

Bacchanal: Db, Ab, Eb, Bb, F, C, G, D, A, E

Canboulay: Gb, Db, Ab, Eb, Bb, F, C, G, D, A, E, B

**play one octave ascending and descending (top note repeated) AND tonic arpeggio ascending and descending (top note repeated)*

Example (C major): C – D – E – F – G – A – B – C, C – B – A – G – F – E – D – C, C – E – G – C, C – G – E – C

2) **Chromatic Scale (@ quarter note = 120bpm, 3/4 time signature):**

**play one octave ascending and descending (top note NOT repeated)*

C – C# – D – Eb – E – F – F# – G – Ab – A – Bb – B – C – B – Bb – A – Ab – G – F# – F – E – Eb – D – C# – C

3) **Prepared Excerpts:**

Canboulay = from “The Wedding,” by Ray Holman @ half note = 95 bpm

Tenor, Double Tenor, and Double Seconds: Beginning to A (mm. 1 – 30)

Guitar/Cello and Bass: G – H (mm. 139 – 157)

T = p3, DT = p4, DS = p5,
GC = p6, B = p7

Bacchanal = from “Pan Rising,” by Len ‘Boogsie’ Sharpe @ half note = 95 bpm

Tenor, Double Tenor, Double Seconds, Guitar/Cello: D, with repeat (mm. 72 – 87)

Bass: E, first ending only (mm. 88 – 103) AND N, first ending only (mm. 252 – 267)

T = p8, DT = p9, DS = p10
GC = p11, B = p 13 + 14

Jouvert = from “Pan Rising,” by Len ‘Boogsie’ Sharpe @ half note = 90 bpm

Tenor, Double Tenor, Double Seconds, and Bass: E, both endings (mm. 88 – 111)

Guitar/Cello: F and G (mm. 112 – 144)

T = p8, DT = p9, DS = p10
GC = p11 + 12, B = p13

- 4) **Sight Reading Excerpt** – This will be provided to you by Dr. Justus on the day of your audition. It will be in your voice/clef and it will be in cut time. Please review this time signature as needed. PRO TIP = go back through your old steel music or method book and find the charts/excerpts in cut time – this will help you review for the sight-reading exercise.

The Wedding

(Shaadi)

Ray Holman

Intro

Canboulay Intro to A

Soca ♩=116

8

15

20

26

30

A

36

43

51

B

58

The Wedding

(Shaadi)

Ray Holman

Intro

Canboulay Intro to A

Soca ♩=116

8

15

20

26

30

A

36

43

51

B

58



G



144



149

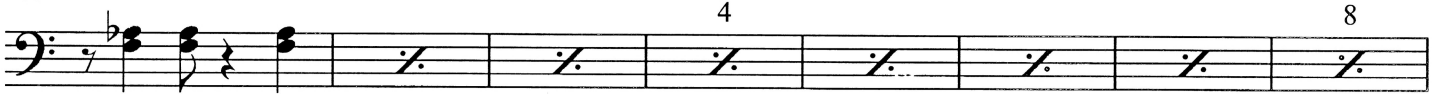


154

H



159



167



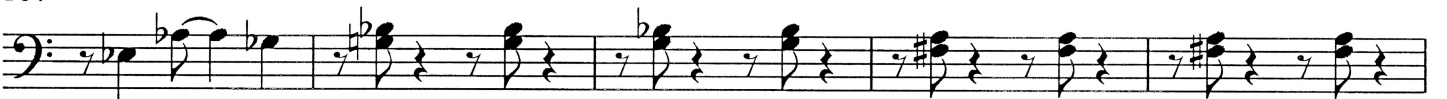
173



179



184



189



66

72

D

mf

77

81

86

E

f

92

98

1.

104

2.

110

F

116

122

66

72 **D**

mf

77

81

86 **E**

f

92

98 1.

104 2.

110 **F**

116

122

mf f

D mf

E

1. 2. f

F mf

122 *f*

128 **G** *mf*

133

138 1. 2.

145 **H**

151

157

163 **I**

168

174 *b* (b)

179 **J**

61

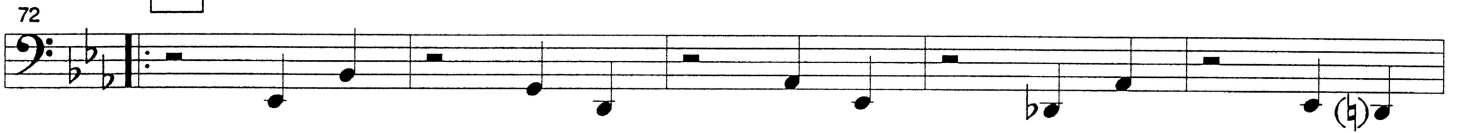


66



D

72



77



83



E

88



93



99



104



f

F

110



116



248

f

254

259

mf

264

269

0

2

f

275

281

1.

2.

P

mf

287

294

300

306